



# **DYNAMIC FUTURE-PROOFING**



**WHAT HAS ALREADY HAPPENED THAT HAS YET**

An abstract 3D architectural rendering of a white, organic structure with a grid-like interior. The structure is composed of thick, curved white bands that form a complex, interconnected lattice. The interior of the structure is filled with a dark, grid-like pattern, possibly representing a mesh or a series of interconnected nodes. The lighting is dramatic, with strong highlights and deep shadows, creating a sense of depth and volume. The overall aesthetic is modern and futuristic.

WHAT HAS ALREADY HAPPENED THAT HAS YET  
TO MAKE ITS FULL IMPACT



**INTEGRATING DISRUPTION IN EVERYDAY BUSINESS**

**EQUILIBRANT**



**RESTORING THE EQUILIBRIUM BETWEEN  
CORE COMPETENCE AND NEW VALUE CREATION**

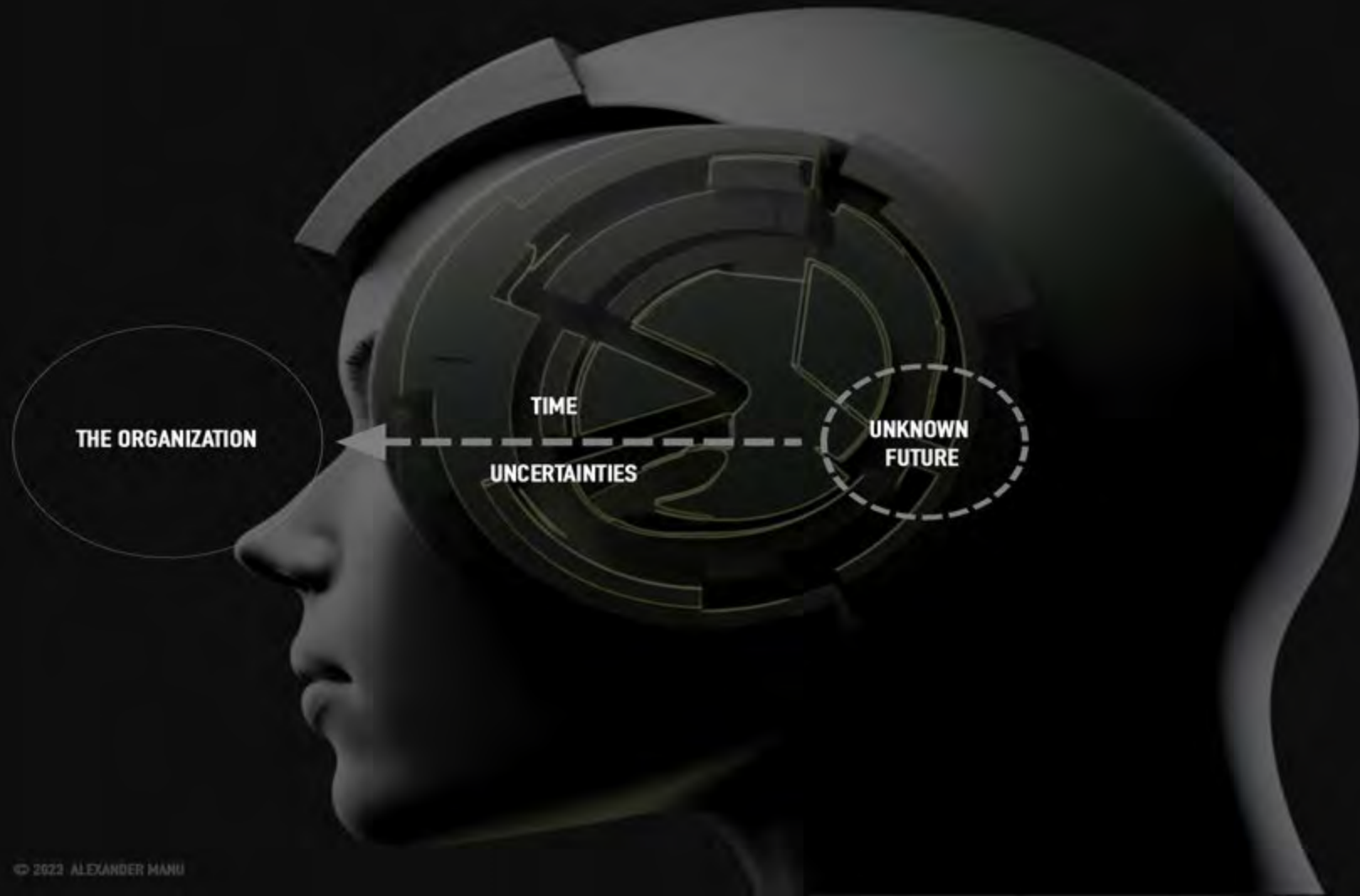
The background features a smooth gradient from dark blue on the left to teal on the right. Overlaid on this are several vertical panels, each containing a white line-art pattern. These patterns consist of numerous thin lines that curve and intersect to form a series of interconnected, organic shapes, resembling stylized waves or a complex geometric structure.

**THE FUTURE  
IS A CHOICE**

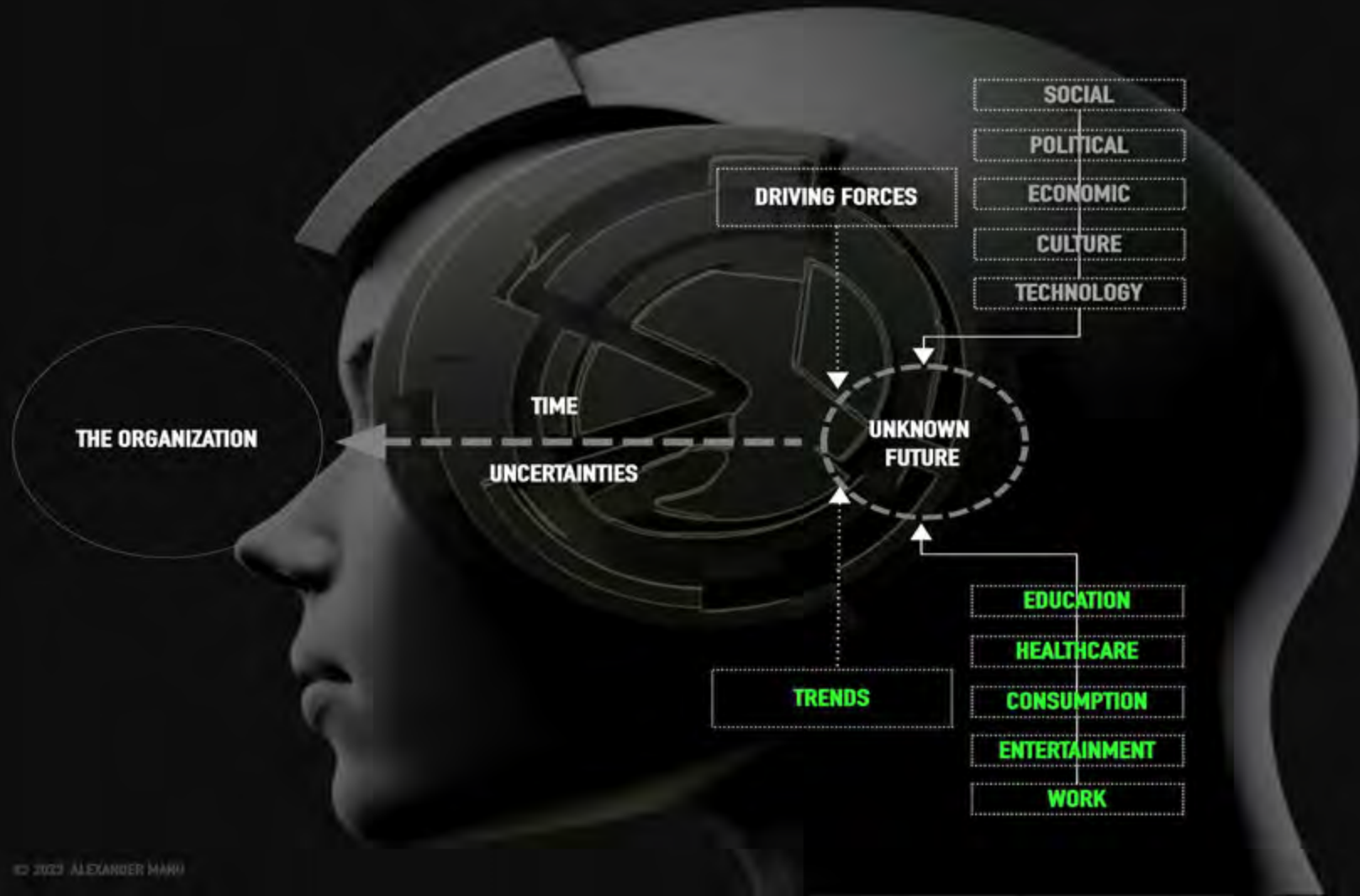


**CHOICE 1**

**LET THE FUTURE MOVE TOWARDS YOU**









**THE FUTURE IS  
NOT ABOUT FORECASTING**



**THE FUTURE IS**  
**ABOUT FORESIGHT**



# CHOICE 2

CHOOSE TO MAKE THE FUTURE YOUR PATH

**SOCIAL**

**POLITICAL**

**ECONOMIC**

**CULTURE**

**TECHNOLOGY**

**DRIVING FORCES**



**SOCIAL**

**POLITICAL**

**ECONOMIC**

**CULTURE**

**TECHNOLOGY**

**DRIVING FORCES**

**TRENDS**

**EDUCATION**

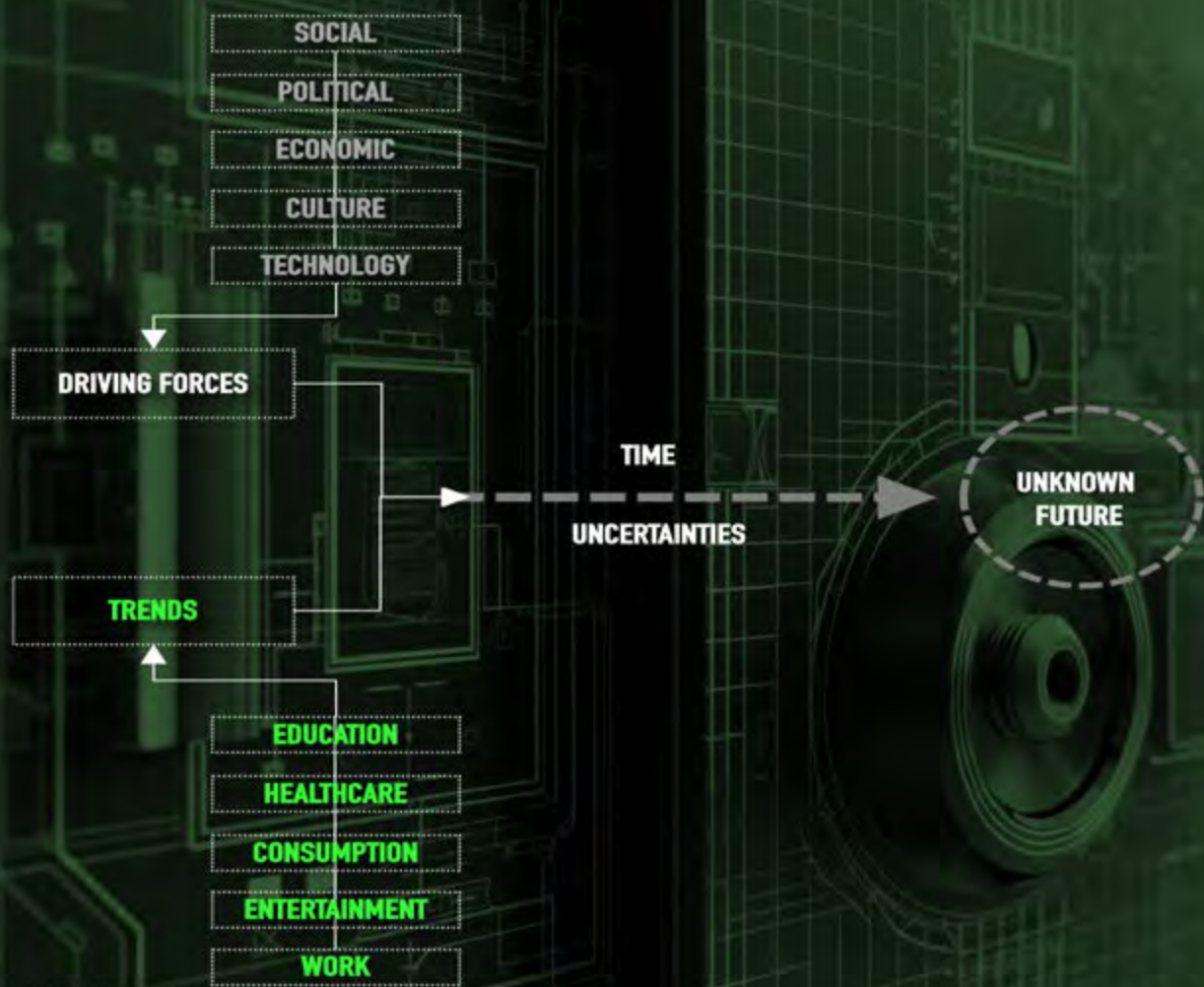
**HEALTHCARE**

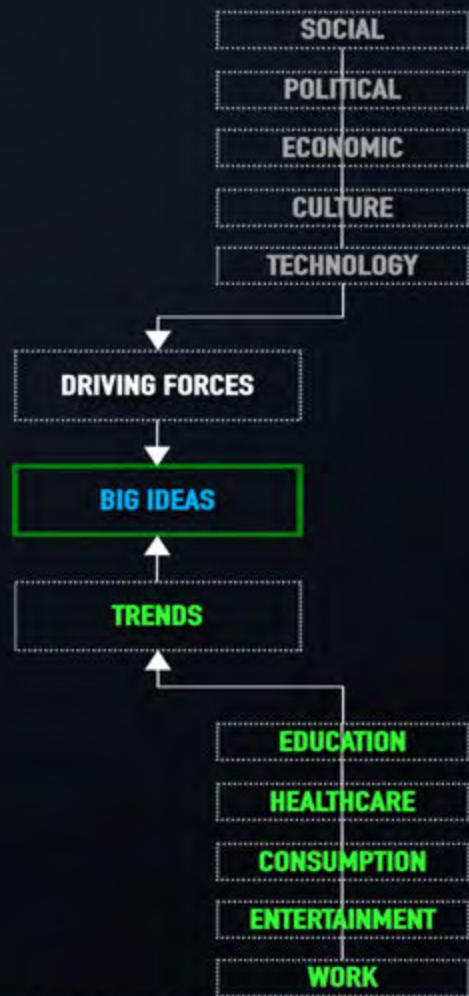
**CONSUMPTION**

**ENTERTAINMENT**

**WORK**



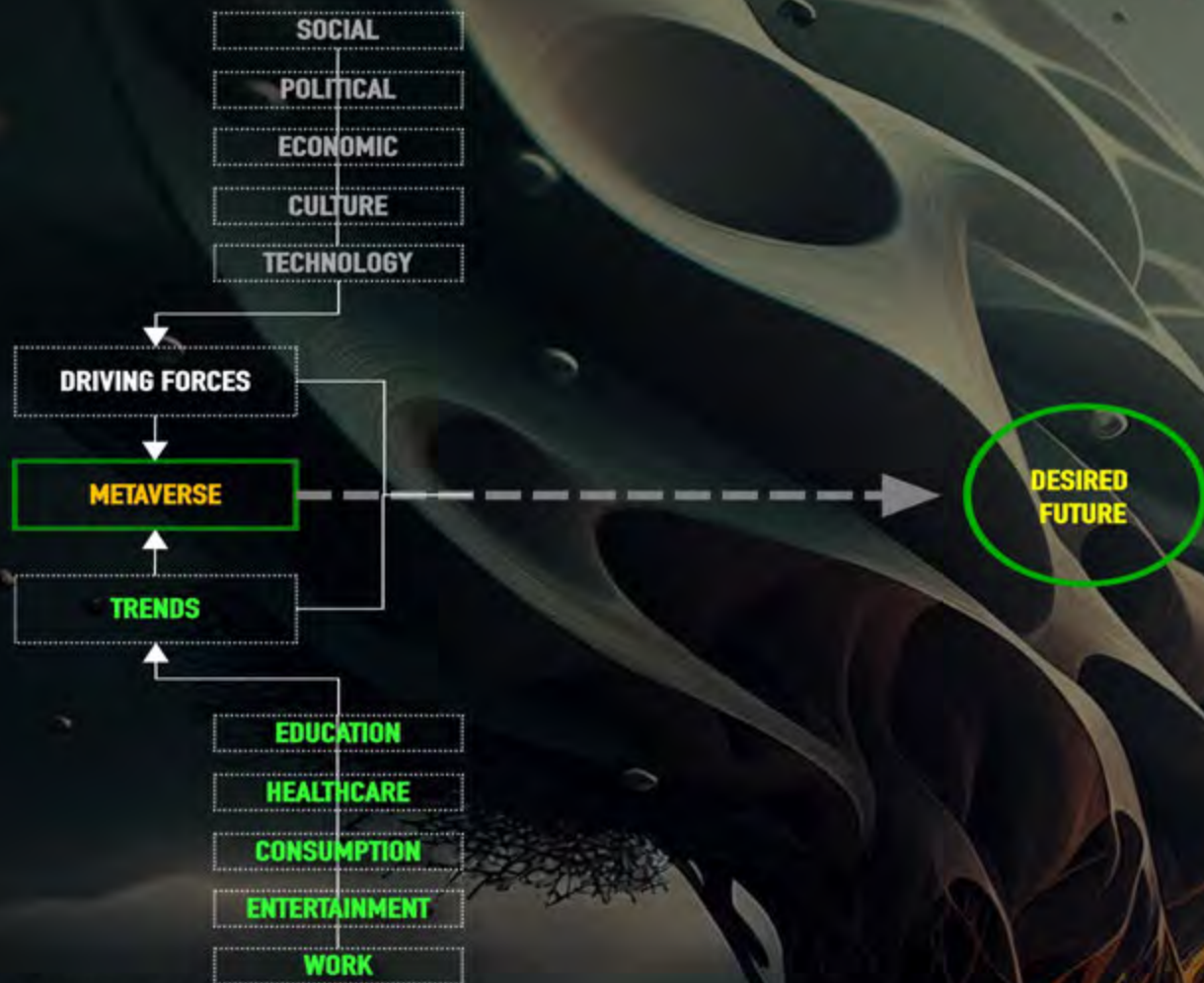


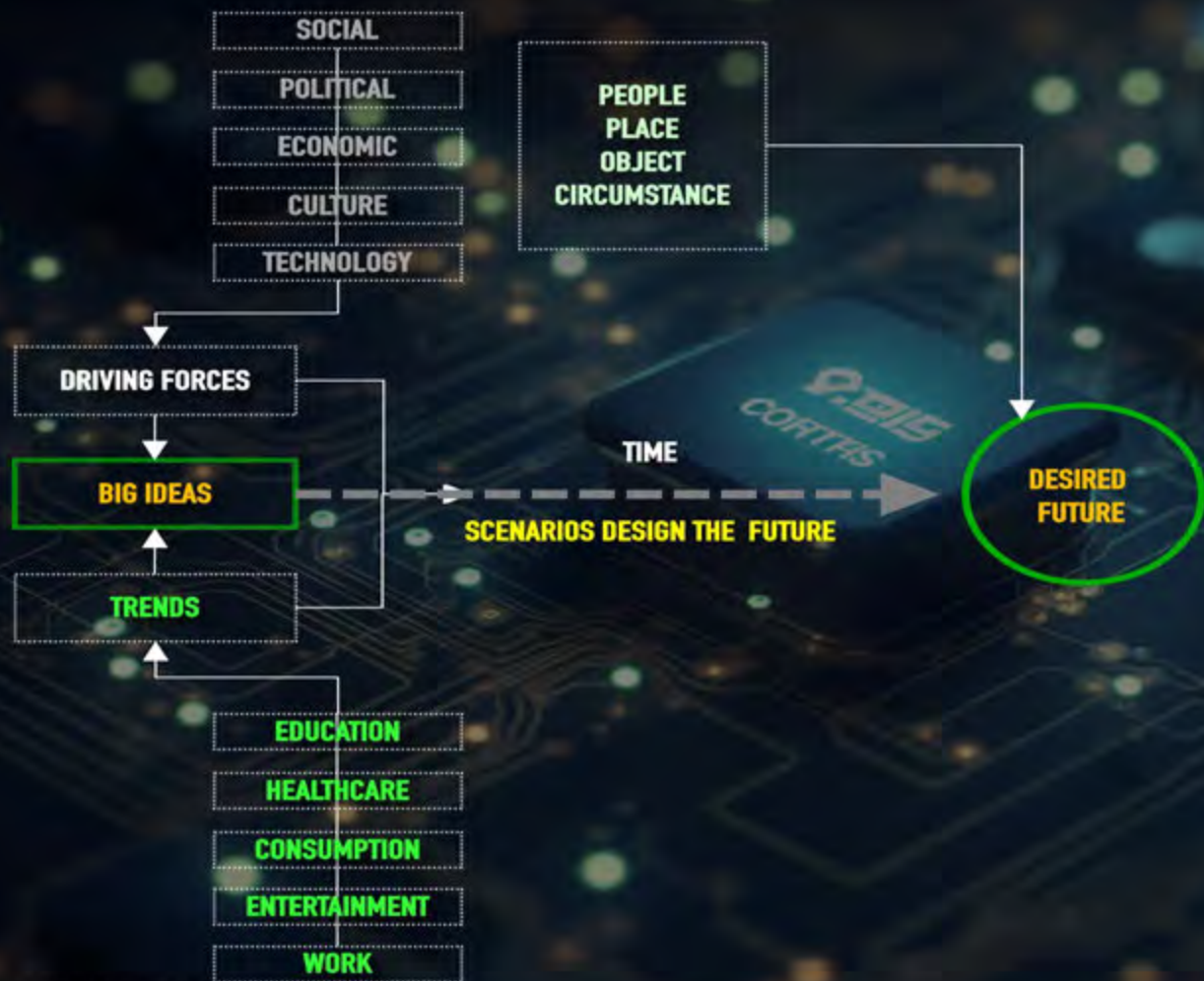














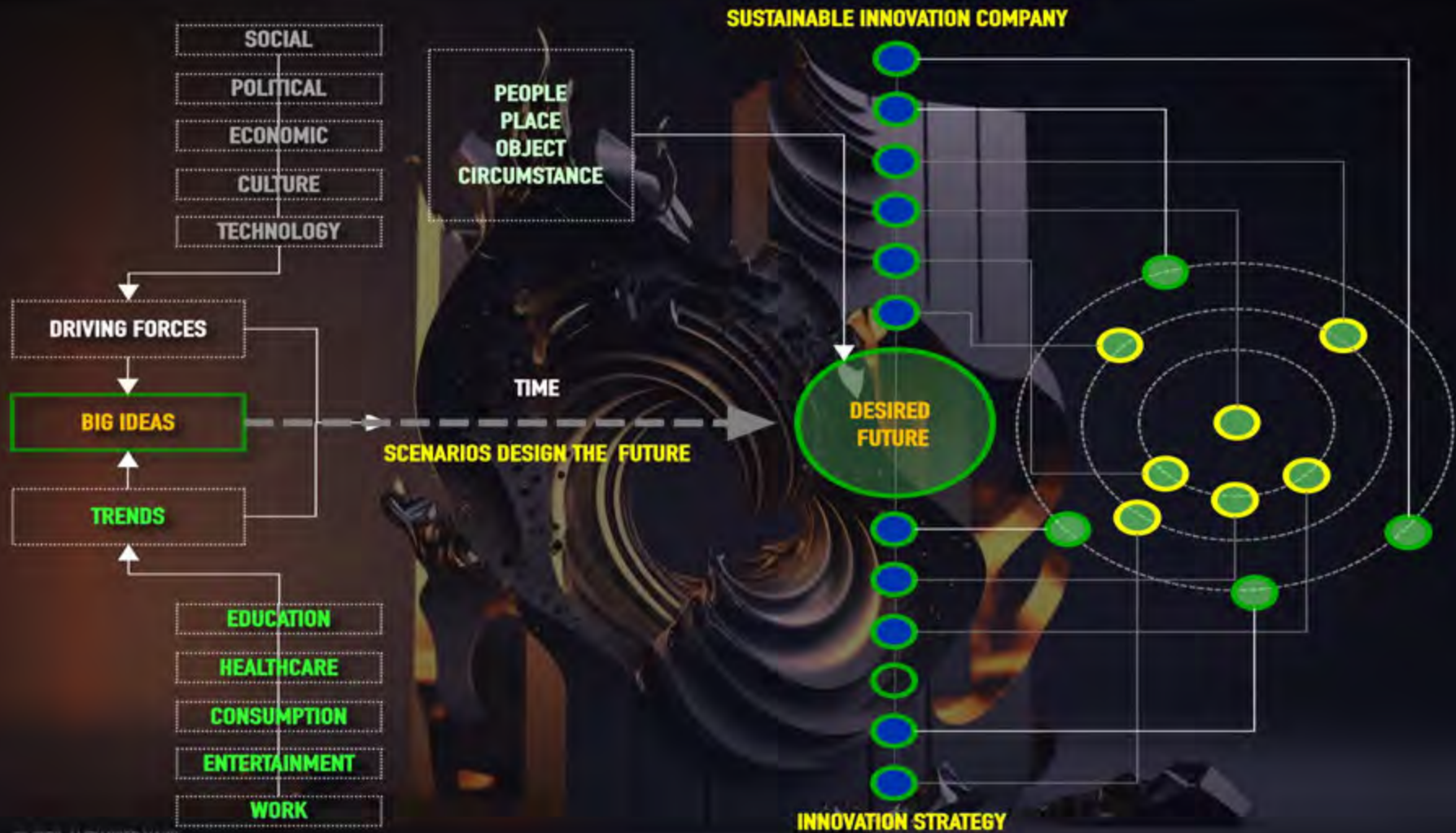


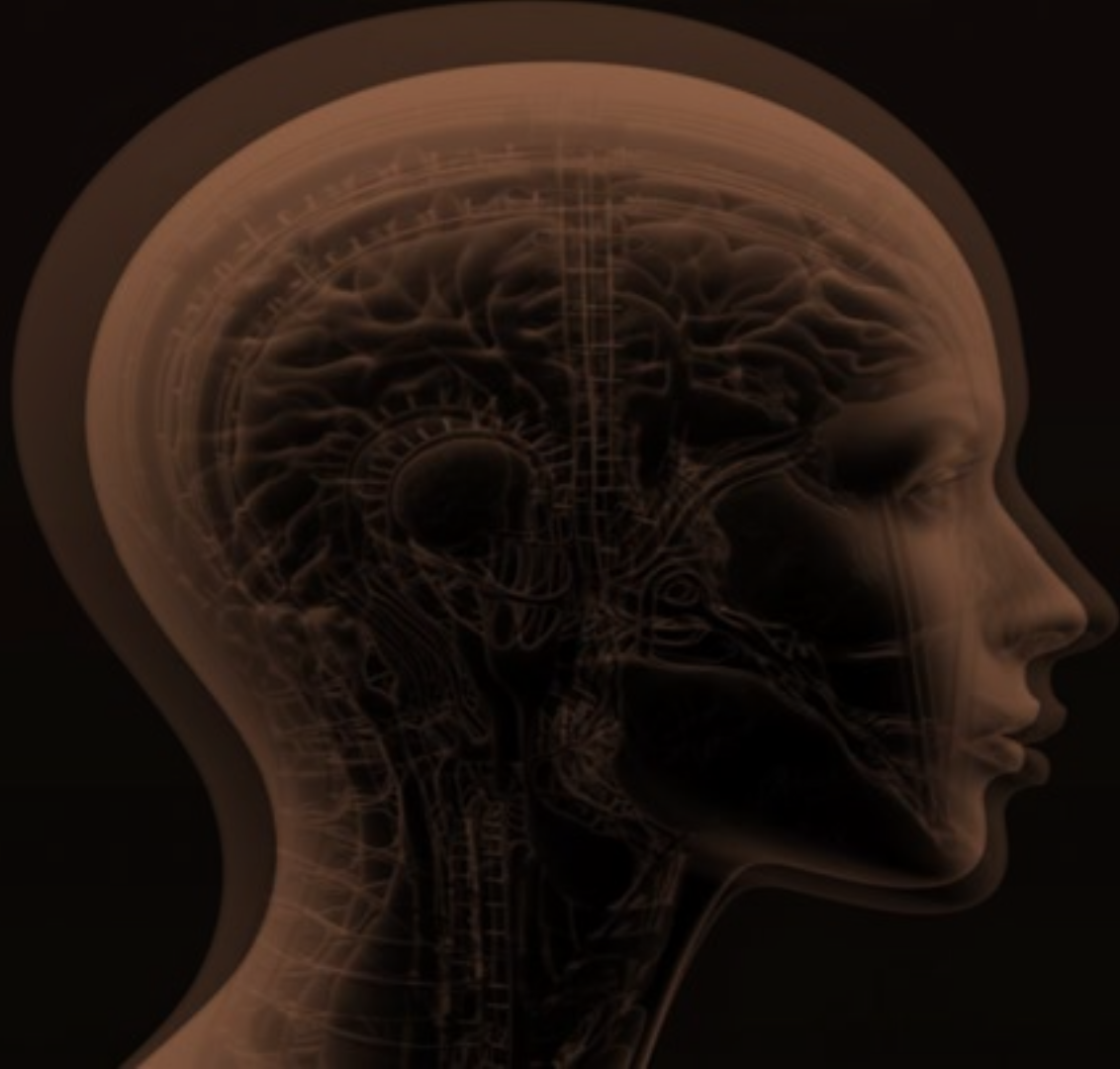














# THE NARRATIVE OF DISRUPTION





**COMPLEXITY** VOLATILITY **UNCERTAINTY**  
AMBIGUITY **GAME CHANGERS**



The background of the slide is a dark green topographic map with white contour lines. The map shows various elevations and valleys, with the contours becoming more closely spaced in some areas, indicating steeper slopes. The overall tone is a deep forest green.

# FORESIGHT STRATEGY PLANOGRAM

The background of the top half of the slide is an abstract composition. On the right side, there is a close-up of a human eye and part of a face, rendered in a painterly style with warm, golden-brown and purple tones. On the left side, there are abstract shapes in shades of teal and purple, overlaid with a topographic map pattern in light blue and white. The bottom half of the slide is a solid black rectangle.

# STRATEGIC CONTEXT



# 1 UNDERSTANDING

MICRO-VIEW MACRO-VIEW

The background features a topographic map with various shades of teal, blue, and purple. A large, semi-transparent number '1' is positioned on the left side. The text is centered horizontally and partially overlaps the '1' and the map.

# UNDERSTANDING COGNITIVE CHANGE COGNITIVE TRANSFORMATION





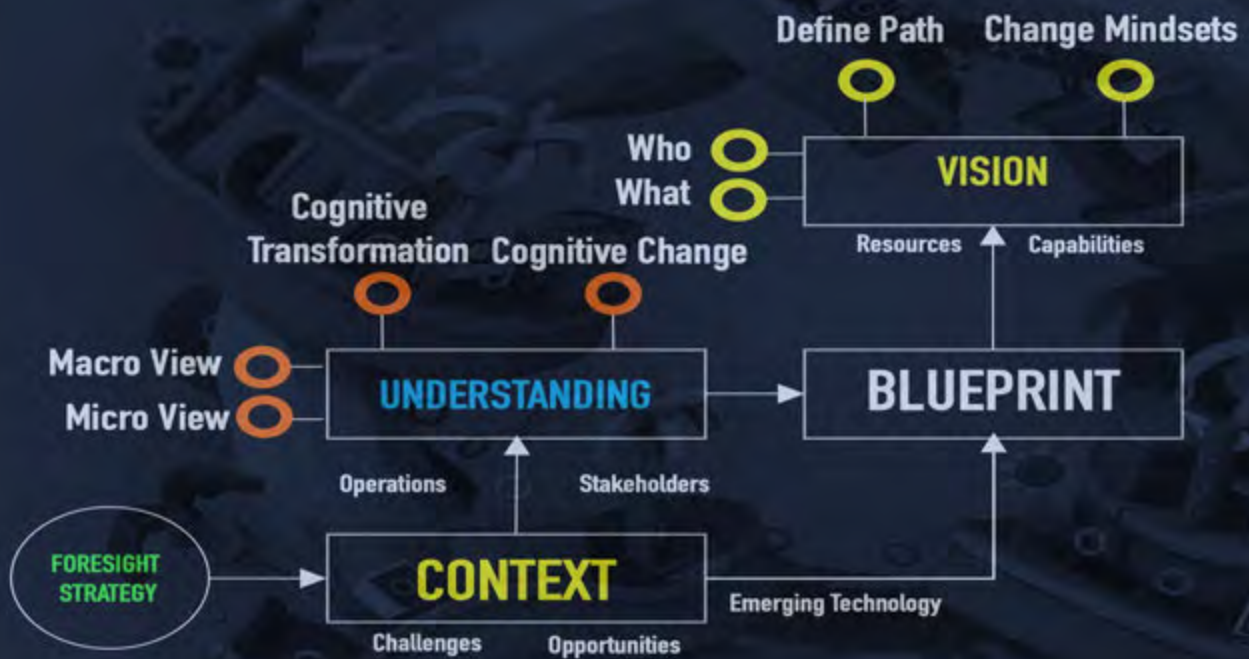


# STRATEGIC BLUEPRINT



**2**  
**VISION**

**WHO WHAT DEFINE PATH CHANGE MINDSETS**



# STRATEGIC METRICS



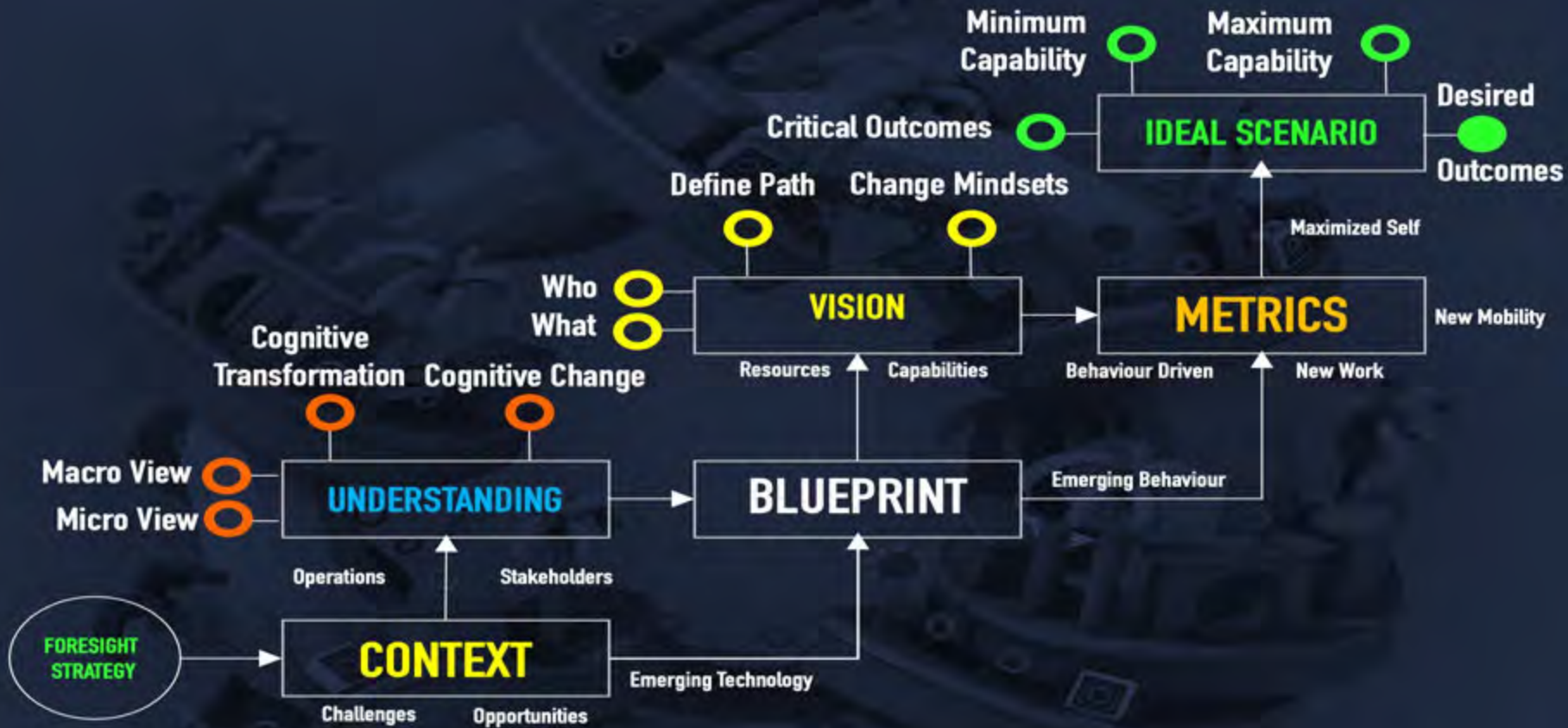
# IDEAL SCENARIO

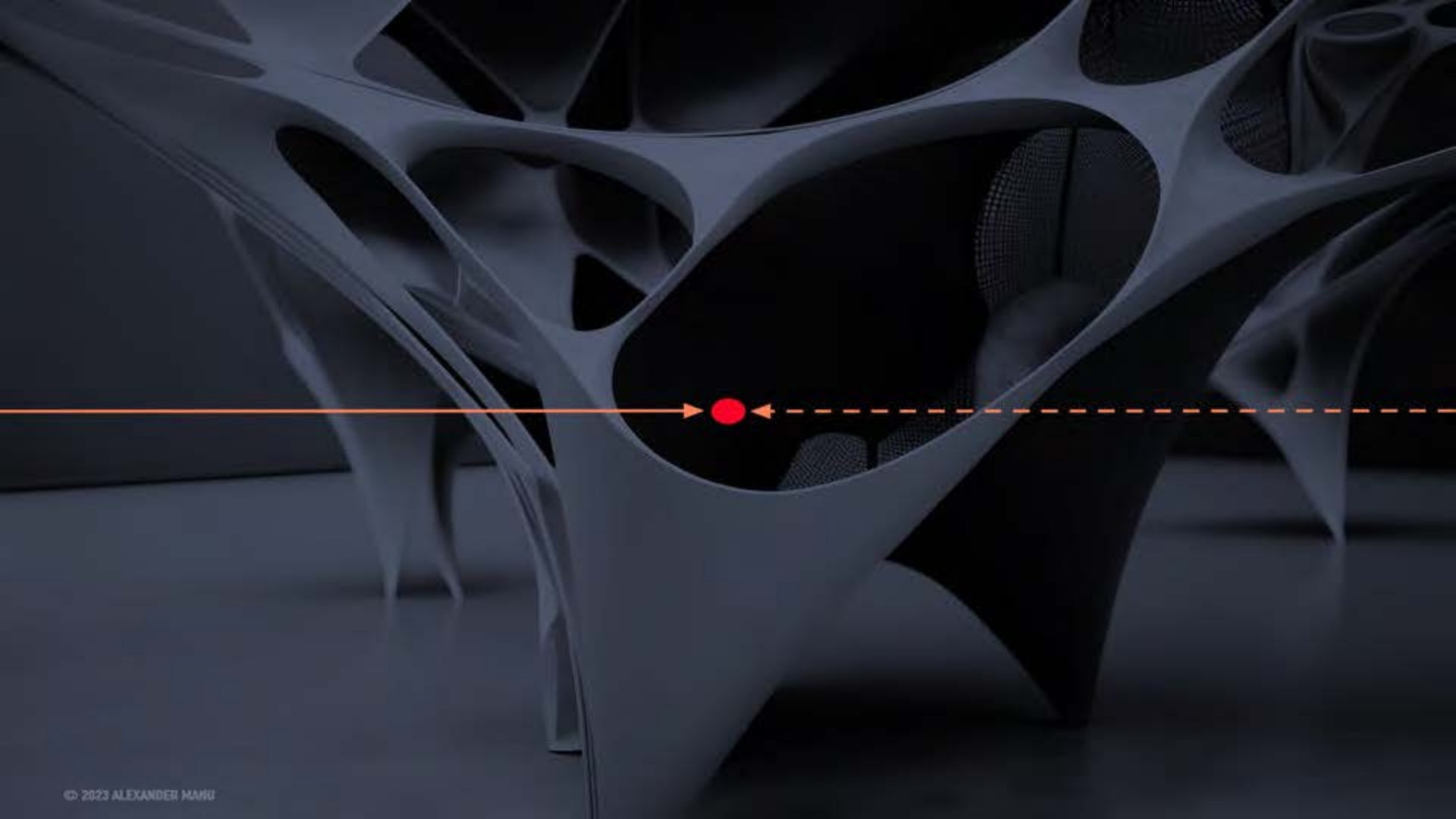
## CRITICAL OUTCOMES VS DESIRED OUTCOMES



# IDEAL SCENARIO

## MINIMUM CAPABILITY VS MAXIMUM CAPABILITY








The background of the top half of the slide is an abstract composition. On the right side, there is a close-up of a human eye, looking slightly to the left. The eye is rendered in a painterly style with warm, golden-brown and purple tones. To the left of the eye, there are wavy, topographic-like patterns in shades of teal, blue, and green. The overall effect is a blend of organic and digital elements.

# STRATEGIC CONTEXT





NETWORKED SOCIETY

**NETWORKED SOCIETY**

**DIGITAL CONSUMERS**







An abstract 3D graphic featuring organic, porous, and cellular-like structures. The shapes are rendered in various shades of blue and white, creating a sense of depth and complexity. The overall aesthetic is futuristic and scientific.

# DISRUPTION AMPLIFICATION





# IMPACT INTENSIFICATION







# MARKET MAXIMIZATION



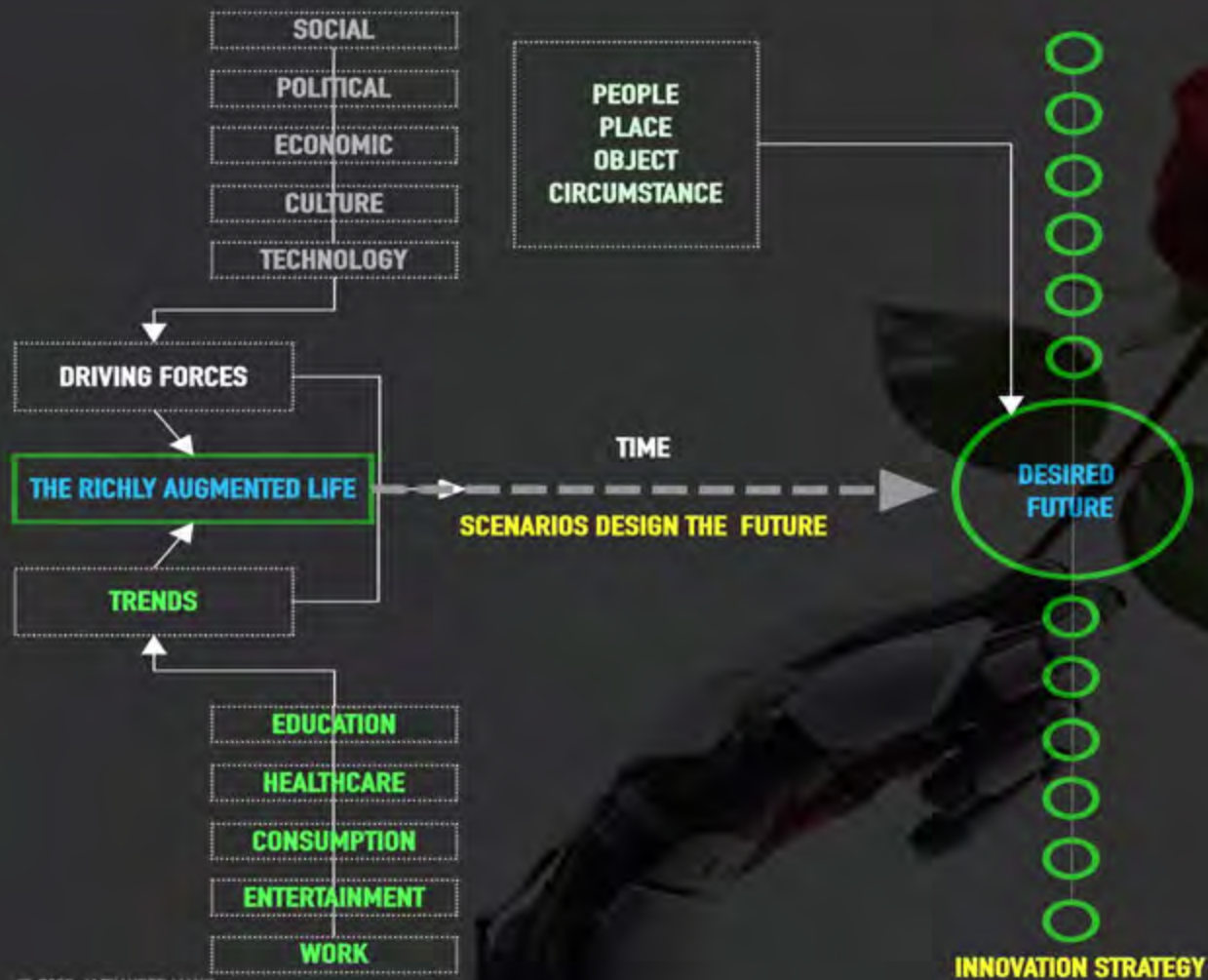


WHAT HAS ALREADY HAPPENED THAT HAS YET  
TO MAKE ITS FULL IMPACT



# STRATEGIC BLUEPRINT







# THE RICHLY AUGMENTED LIFE





**SMART  
EVERYTHING**



The background features a complex, abstract geometric pattern of overlapping, curved shapes in shades of grey, brown, and black, creating a sense of depth and movement. The shapes resemble a stylized, organic structure or a network of interconnected lines.

# THE SMART LIVING CITY



























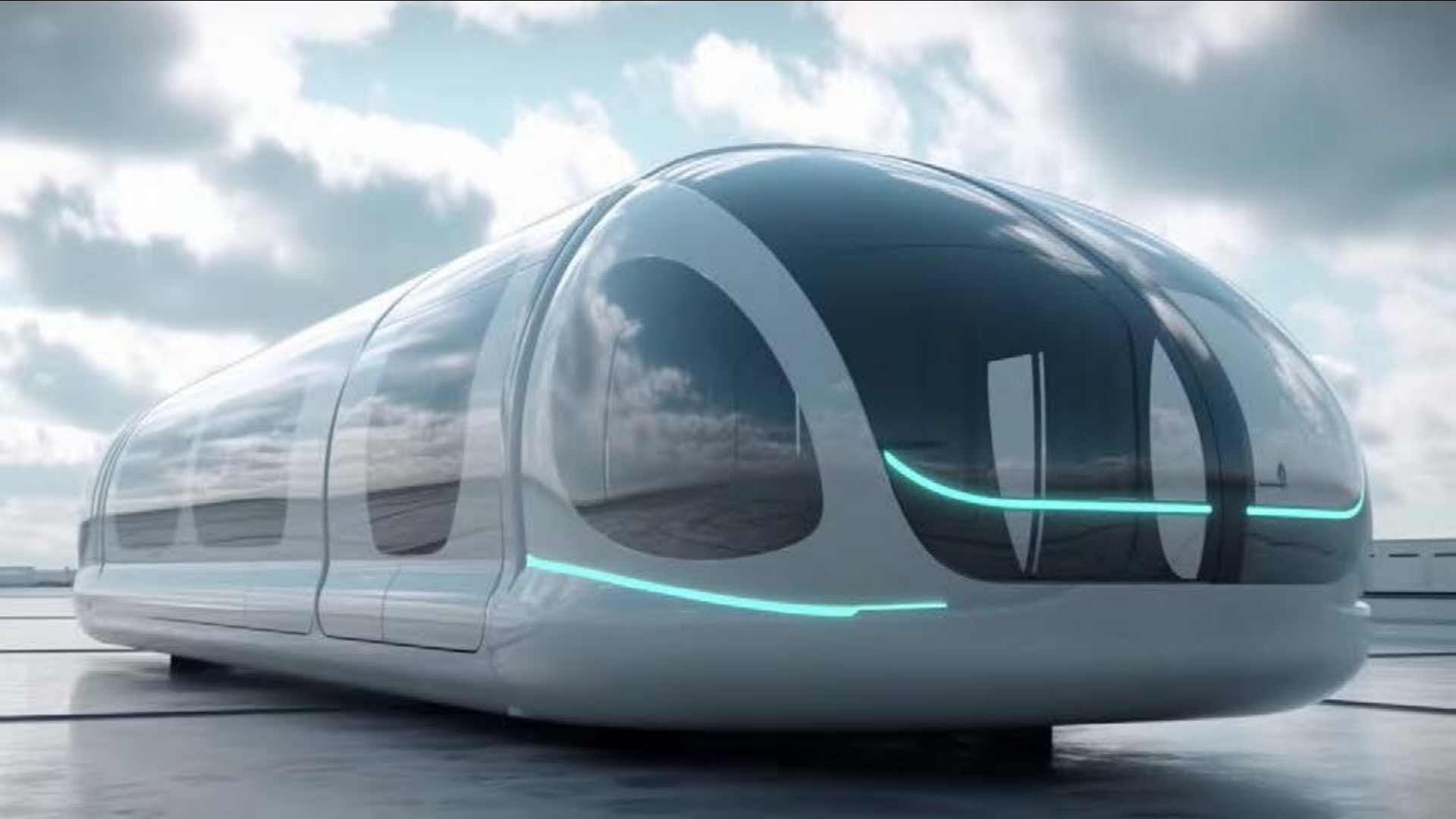






# AUGMENTED TRANSPORTATION









MAISON OI FO

ΣΤΑΘΙΟΝΕΣ • INT

adot

PIBECO





 AACUA

ALCANTARA

LAVERRE







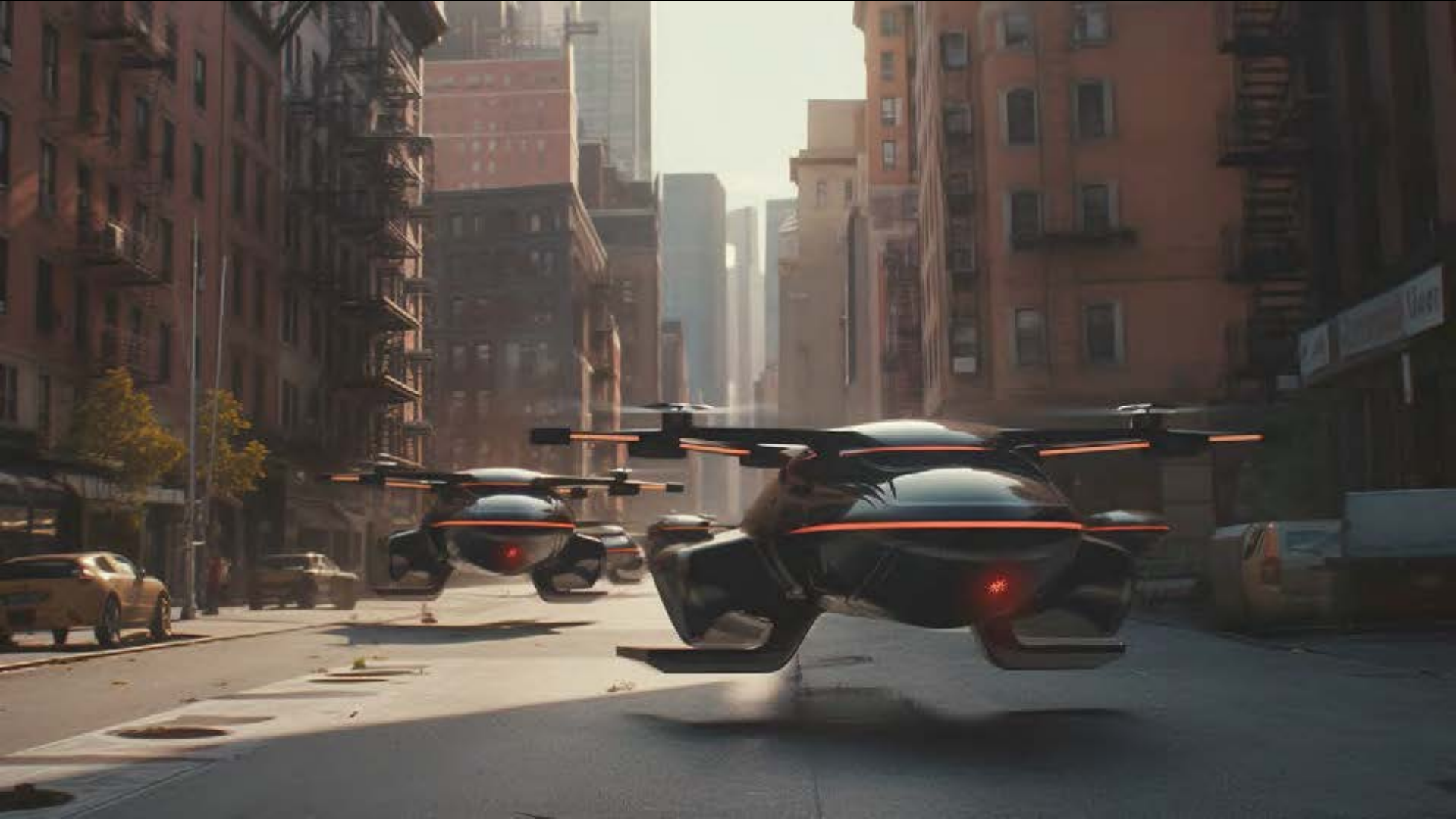


















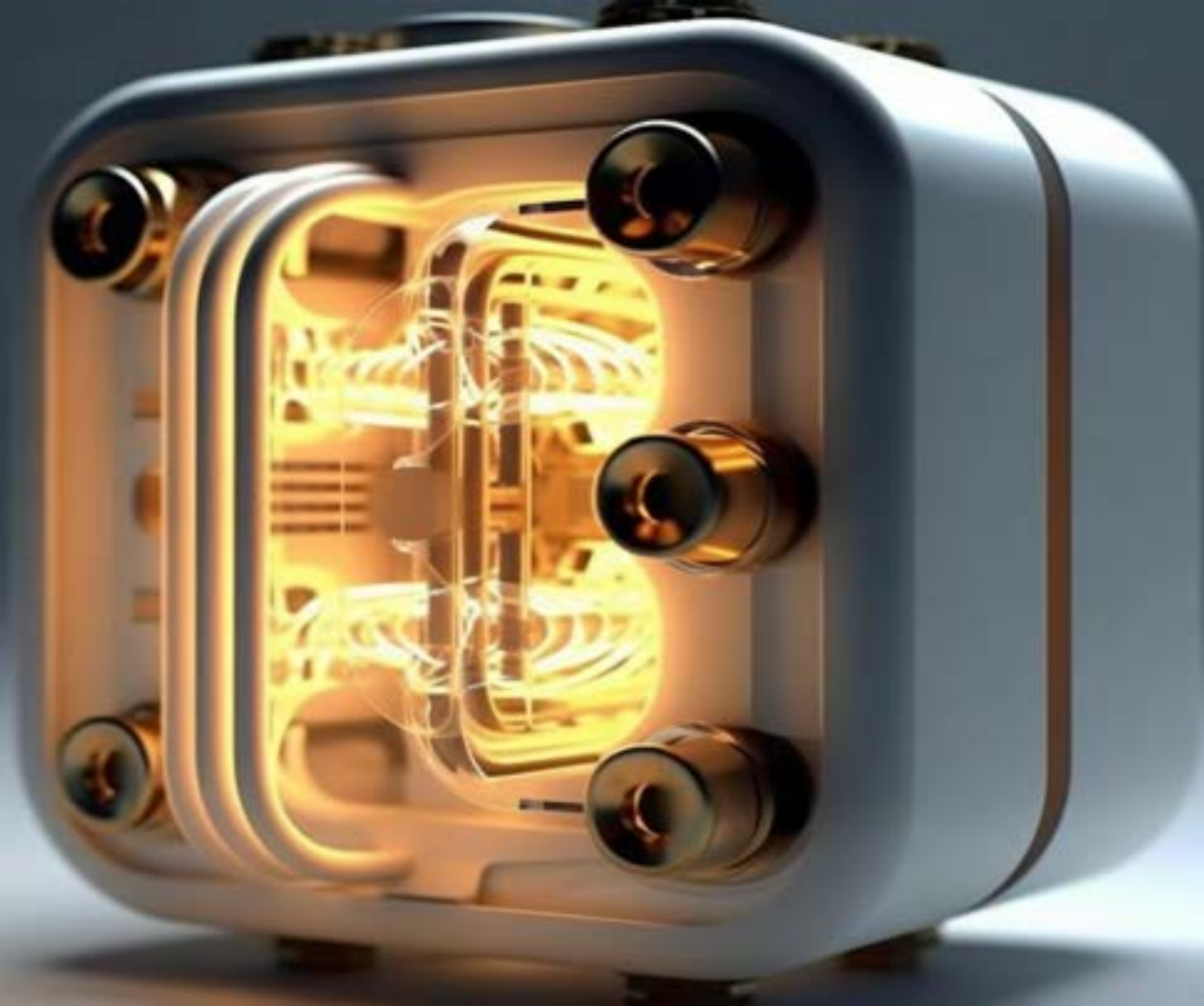




# SMART HOMES























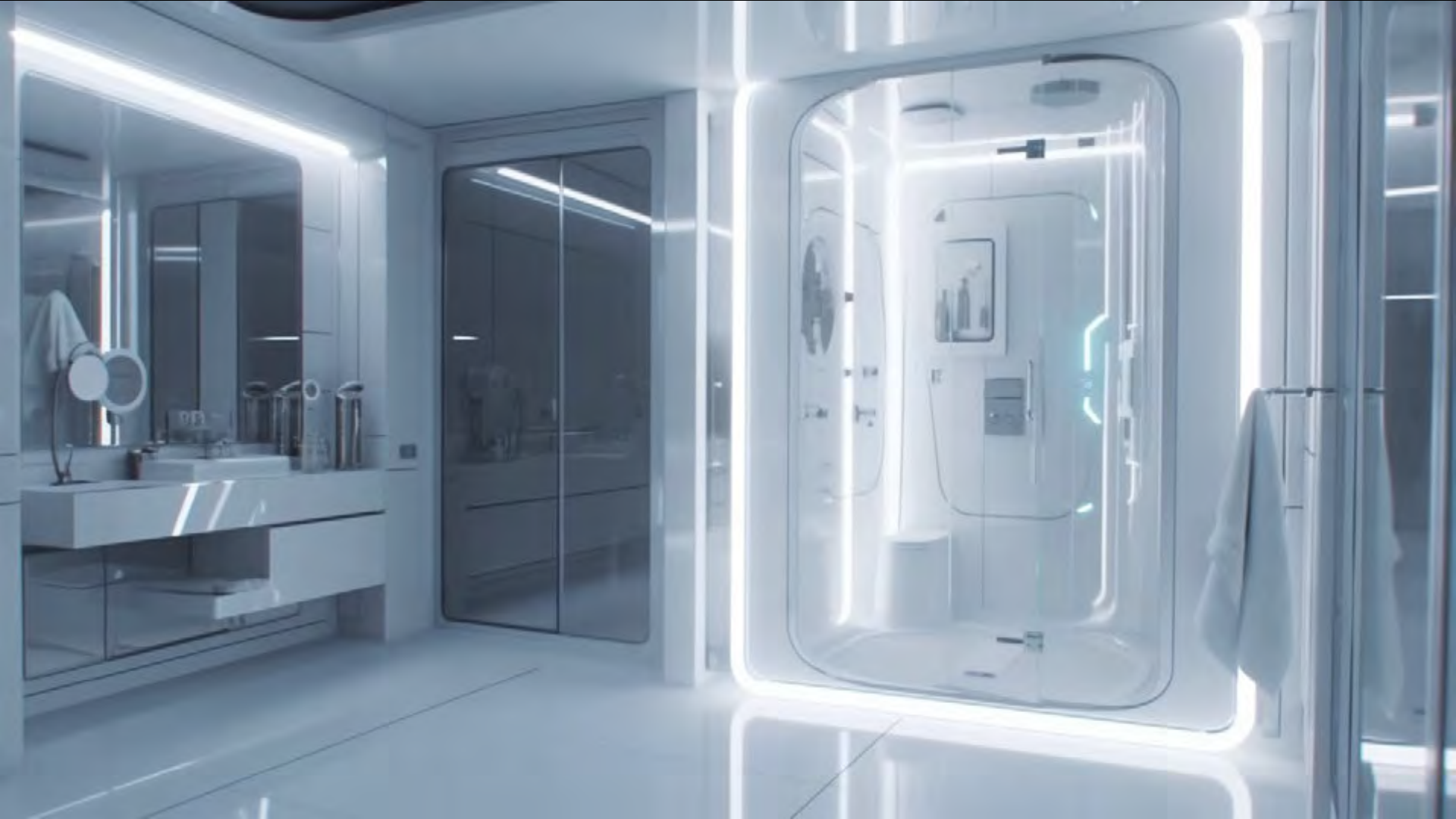












The background features a complex, white, 3D-printed lattice structure with organic, porous, and interconnected shapes, set against a dark, gradient background. The structure resembles a modern architectural or biological form.

# **3D PRINTING** **MOLECULAR GASTRONOMY**







# SUPERFOODS

An abstract 3D geometric pattern in shades of green and yellow. The pattern consists of interconnected, rounded shapes that resemble a complex lattice or a series of overlapping spheres. The central part of the pattern is a large, rounded sphere with a grid of circular holes, similar to a honeycomb or a porous material. The overall effect is a sense of depth and complexity, with light and shadow creating a three-dimensional appearance.



























The background features a complex, 3D-rendered abstract structure. It consists of several interconnected, organic forms with intricate, porous, and perforated surfaces. The colors are primarily various shades of blue, ranging from light to dark, with a prominent bright green section. The lighting creates strong highlights and deep shadows, emphasizing the three-dimensional quality and the complex geometry of the shapes. The overall aesthetic is futuristic and technological.

**SMART, AUGMENTED AND AUTONOMUS  
OFFICES**







































The background features a complex, dark blue 3D geometric structure composed of interconnected, curved, and perforated surfaces, resembling a modern architectural or industrial design. The lighting creates soft shadows and highlights the intricate details of the structure.

# WEARABLE OFFICE





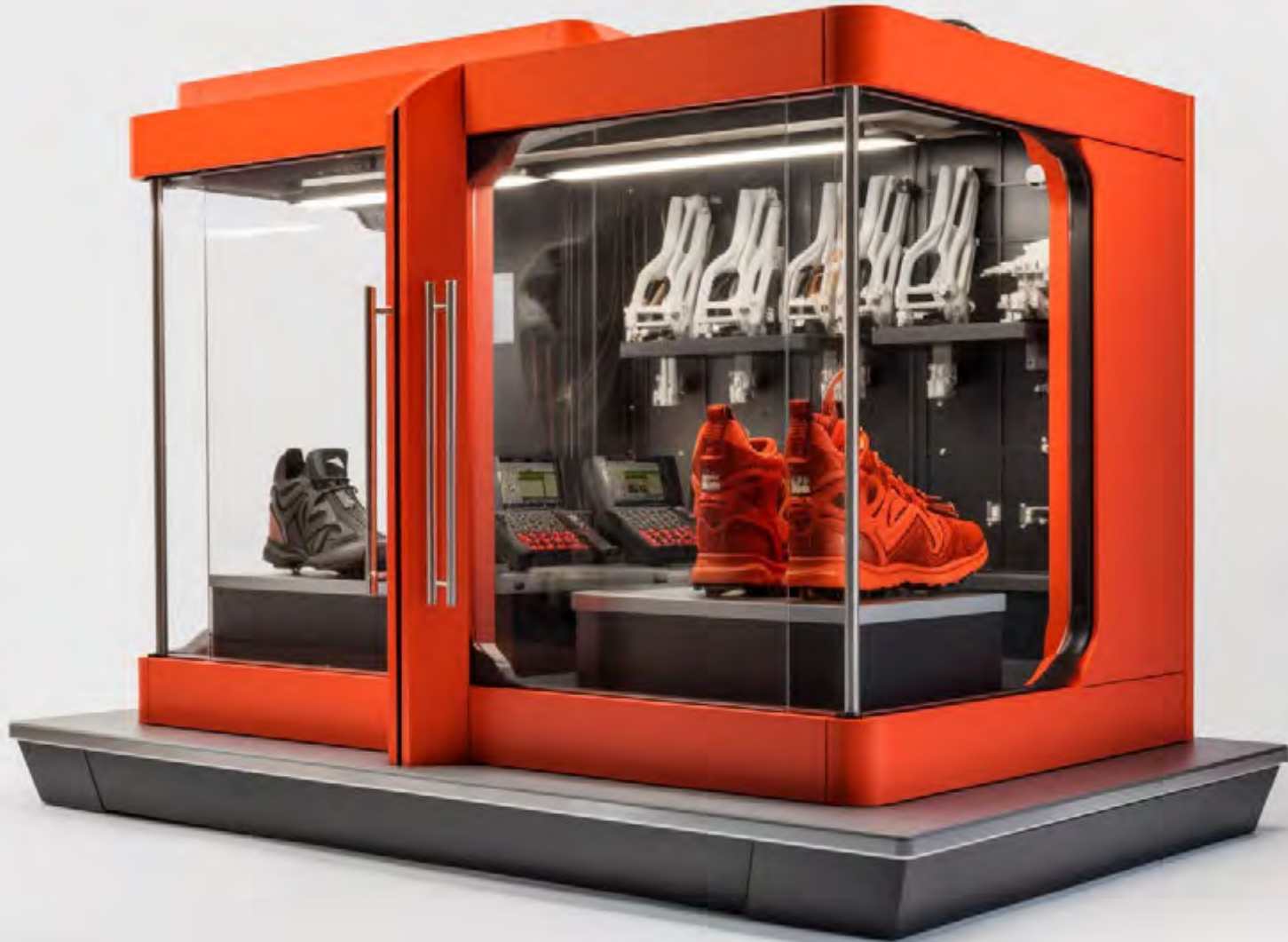








**SMART, AUGMENTED AND AUTONOMOUS  
RETAIL**











AATTOE

AAATAT

ARTA

ARTA





A close-up portrait of a woman with dark hair and light-colored eyes, wearing a grey hooded raincoat. She is looking directly at the camera with a neutral expression. The scene is set in the rain, with water droplets visible on her face and the hood of her coat. The background is a dark, overcast sky.

# BEYOND WELLNESS





# THE QUANTIFIED SELF











An abstract 3D rendering of biological structures, possibly representing a DNA double helix or a complex protein network, rendered in various shades of blue. The structures are layered and semi-transparent, creating a sense of depth and complexity. The overall aesthetic is scientific and futuristic.

# REGENERATIVE MEDICINE



# THE REGENERATIVE SELF







# REGENERATIVE TECH













# PRE-EMPTIVE DENTISTRY



















**REGENERATIVE  
WEARABLES**

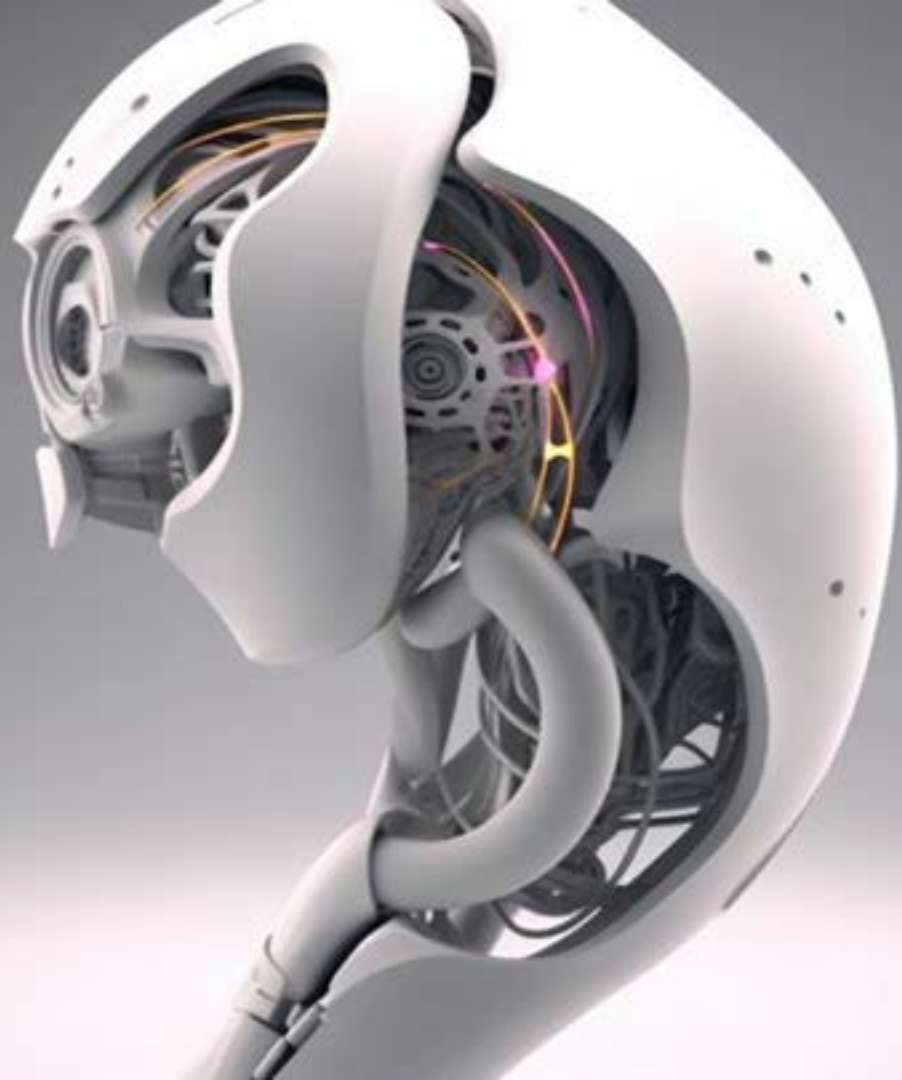






REGENERATIVE  
**IMPLANTABLES**







expoorgn™







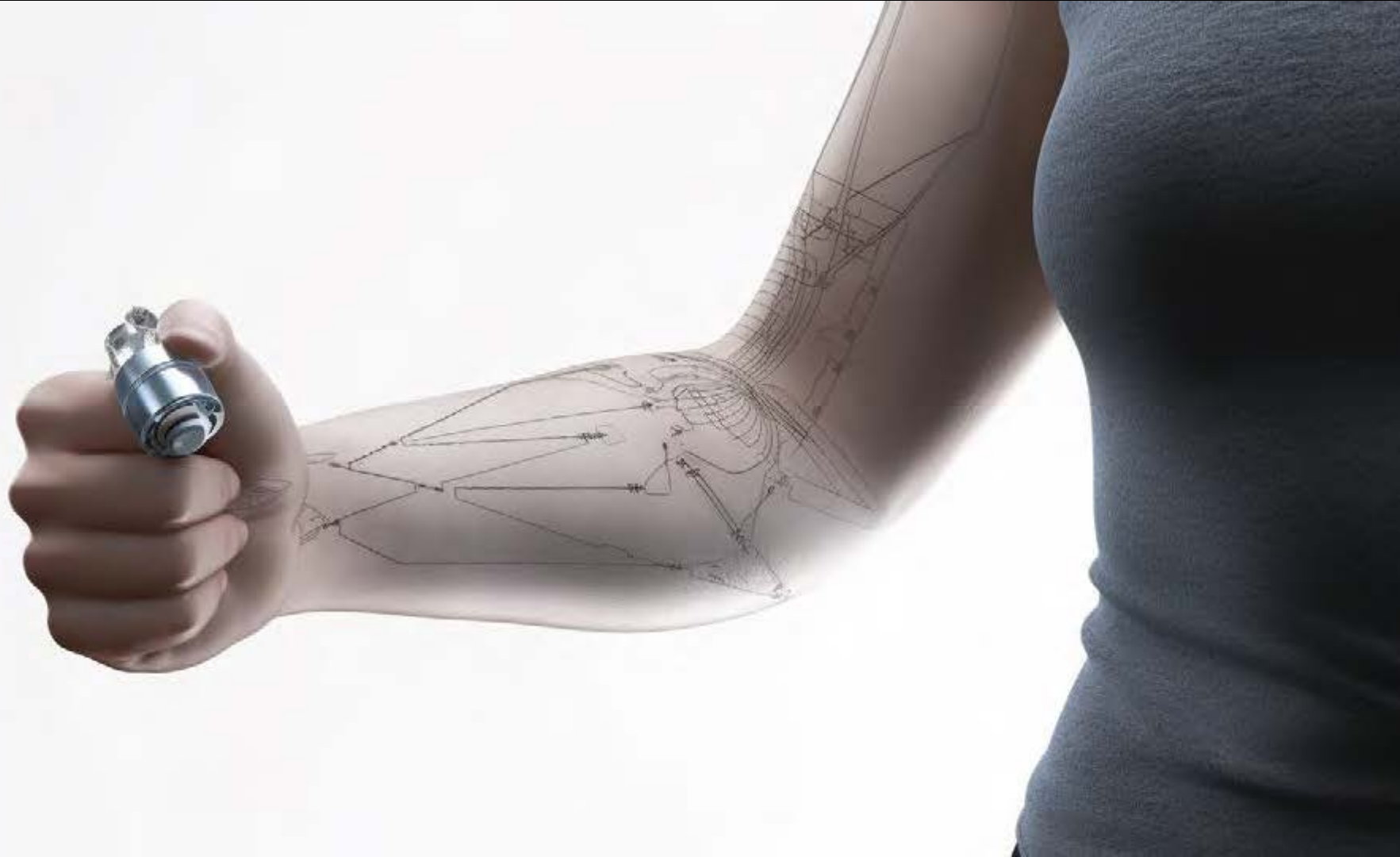


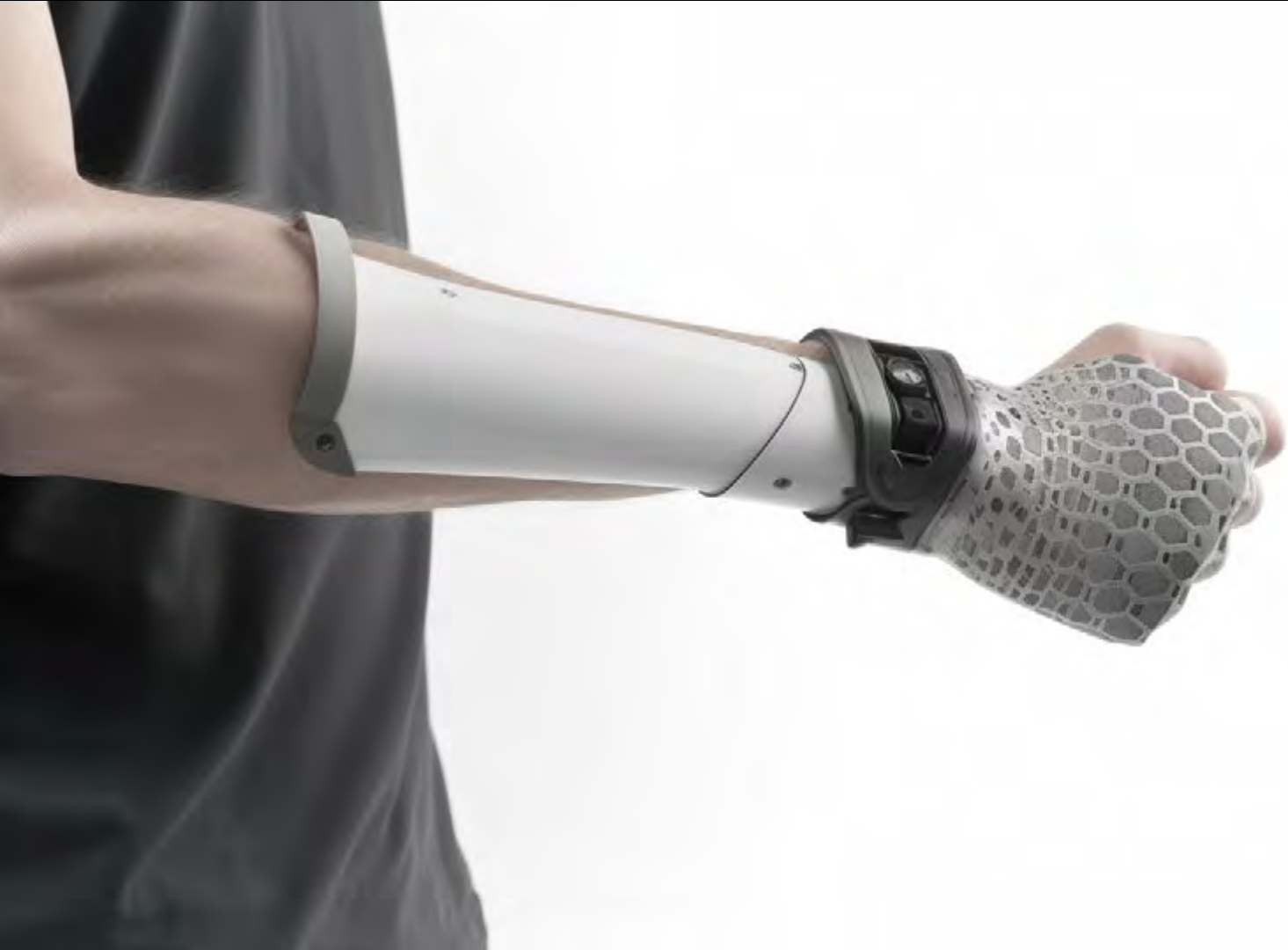






















# REGENERATIVE EYECARE



















**REGENERATIVE**  
**FASHION**











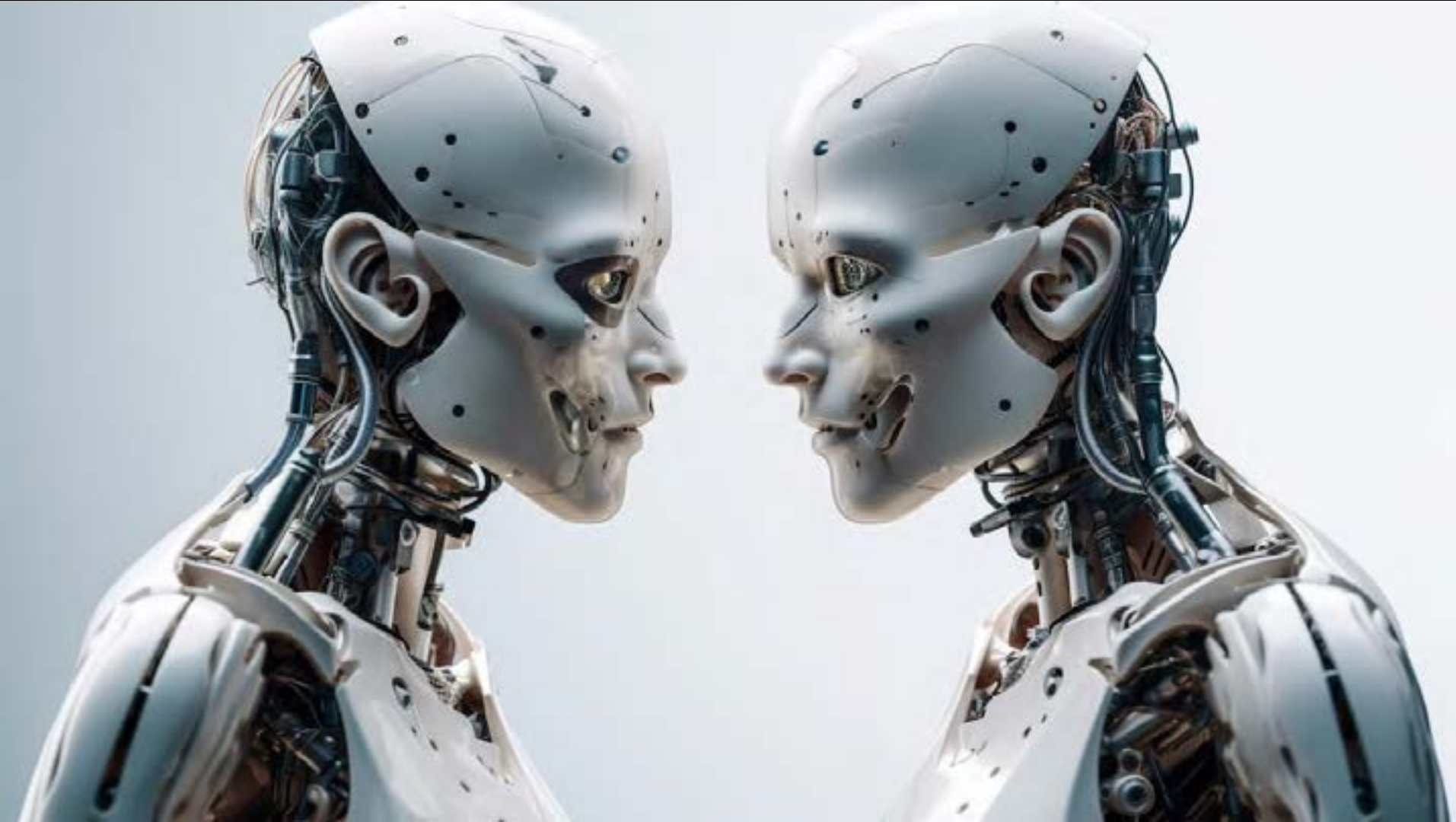






**RELENTLESS**  
**DUALITY**









An abstract 3D rendering of a complex, organic, lattice-like structure. The structure is composed of interconnected, curved, greyish-white surfaces that form a series of irregular, interconnected voids and chambers. The lighting is dramatic, with strong highlights and deep shadows, creating a sense of depth and volume. The overall aesthetic is futuristic and architectural.

# DIGITAL WEARABLES















# WELLNESS APPAREL















# IMMERSIVE TRAVEL



















OvVina ← →

Copinda™ 910  
Eial 2X0

Oal Vect

The background is a dark green color with a complex, abstract pattern of overlapping geometric shapes, including cubes and spheres, creating a 3D effect. On the right side, there is a wireframe tree structure that fades into the background. The text is positioned in the center-left area.

**SMART, AUGMENTED AND AUTONOMUS  
LUGGAGE**









# IMMERSIVE LEARNING

















The background is a dark green color with a complex, organic pattern of lighter green, flowing, and somewhat circular shapes that resemble a stylized face or a series of interconnected loops. The shapes have a 3D effect, with some appearing to be raised or recessed.

# HOLOGRAPHIC LEARNING















# SMART FURNITURE

























# FORESIGHT

A 3D rendered scene with a central geometric structure, spheres, and blocks. The central structure is a large, white, angular, crystalline form with a complex internal lattice of orange and yellow lines. It is flanked by two large, dark, textured spheres. The foreground is filled with numerous small, grey, rectangular blocks of varying sizes, some of which are illuminated from below by a warm, orange glow. The background is a dark, gradient sky.



**BEWARE BEFORE  
FORESIGHT**





ANY PART





ANY PART IS A MANIFESTATION OF THE  
**WHOLE**

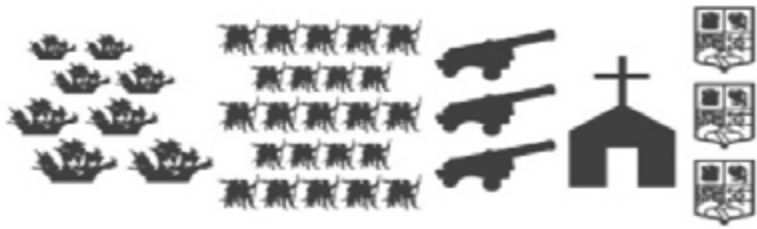
A historical painting depicting a battle scene. In the center, a man in a red and white striped tunic and a dark cape stands prominently, holding a large yellow flag with a red cross and four red lions. He is surrounded by soldiers in various armor, some on horseback. The scene is set outdoors with a cloudy sky and a distant landscape. The overall tone is dramatic and somber.

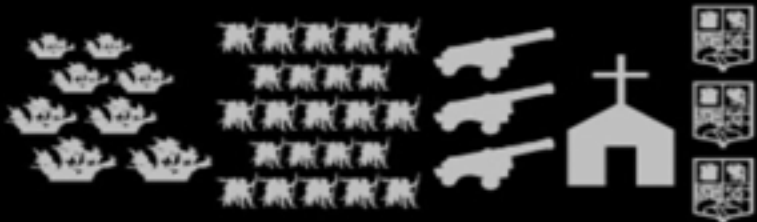
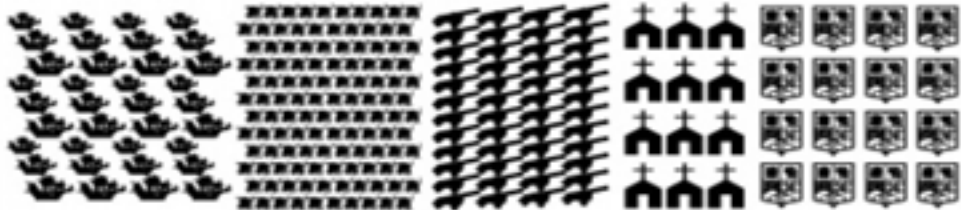
**NOT JUST A COMPONENT OF IT**















COLOMBUS

FACEBOOK

IPHONE

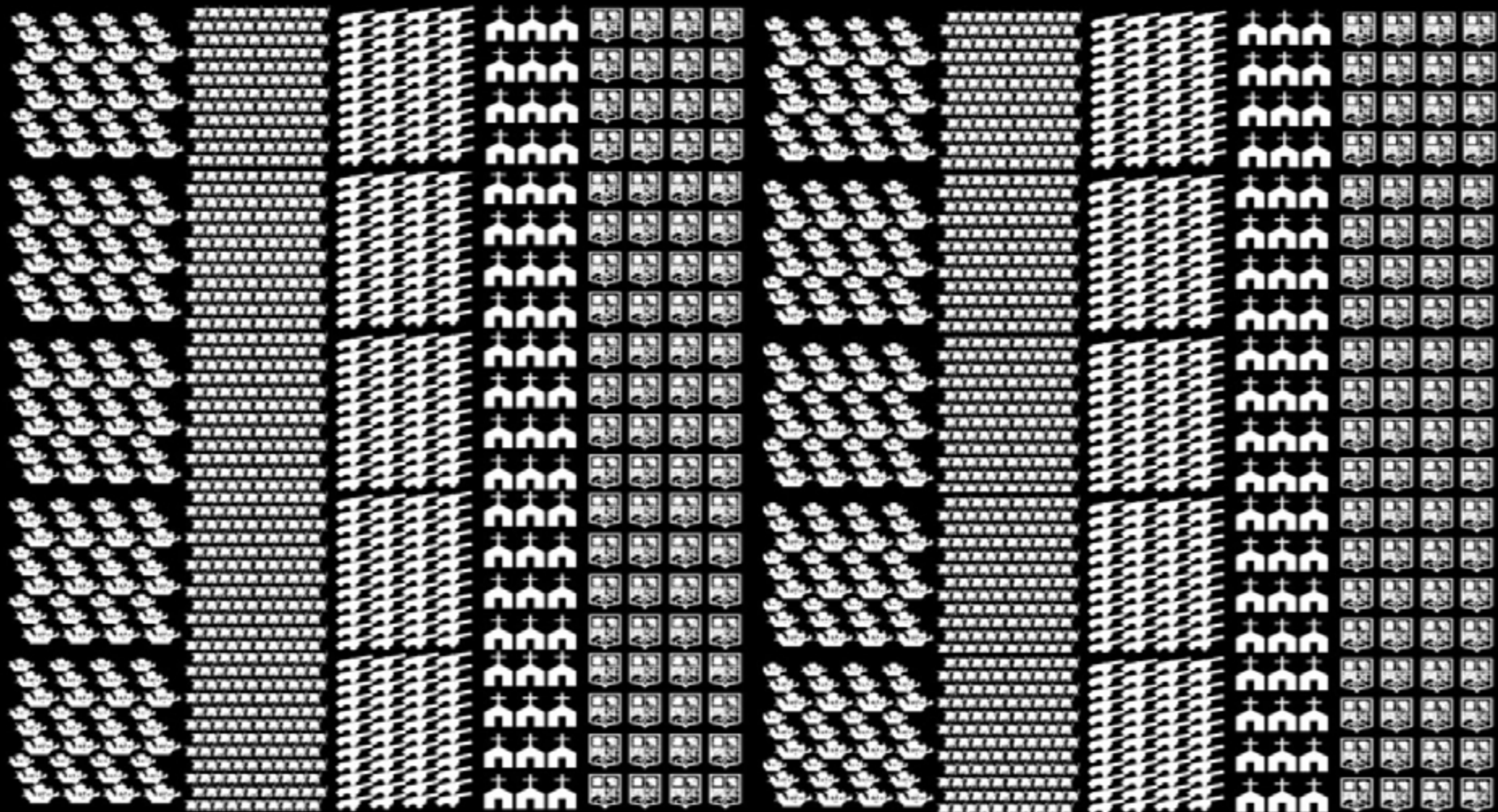
APPLE WATCH

YOUTUBE

APPSTORE

SNAP CHAT







# WHAT IS INEVITABLE

An abstract 3D composition featuring a central, complex geometric structure resembling a cube or a crystalline form. This structure is surrounded by various elements: several spheres of different sizes, some with a textured surface, and others that are smooth. There are also organic, leaf-like shapes and a starburst or explosion-like pattern in the upper left. The overall aesthetic is dark and futuristic, with a focus on light and shadow to define the three-dimensional objects.

# CROSS IMPACT ANALYSIS

The background features a dark blue, almost black, space filled with various 3D geometric objects. These include spheres of different sizes, some with grid lines, and angular, faceted structures. A bright, starburst-like light source is visible in the upper left quadrant, casting a glow on the surrounding objects. The overall aesthetic is futuristic and mathematical.

# THE CONDITIONAL PROBABILITY OF EVENTS



**IF P1  
HAPPENS**



IF P1  
HAPPENS



.50 P2

IF P1  
HAPPENS

.50 P2

.75 P3

IF P1  
HAPPENS

.50 P2

.75 P3

.100 P4

**HOW DO WE CREATE  
NEW VALUE**



The background features a complex, abstract 3D geometric structure composed of various shapes like cubes, spheres, and interconnected lines, rendered in shades of green and black. The overall aesthetic is modern and architectural.

# FOLLOW THE MONEY






# FOLLOW THE BIG PLAYERS



**THE FUTURE IS NOT  
AN ACCIDENT . . .**



**THE FUTURE  
IS A CHOICE**



**AND ONE MORE THING...**

An abstract, organic geometric pattern in shades of green and black, resembling a complex lattice or cellular structure, occupies the top half of the image. The pattern consists of interconnected, rounded shapes and voids, creating a sense of depth and complexity.

EVERY ILLUSTRATION IN THIS PRESENTATION WAS  
**AI GENERATED IN MIDJOURNEY**



